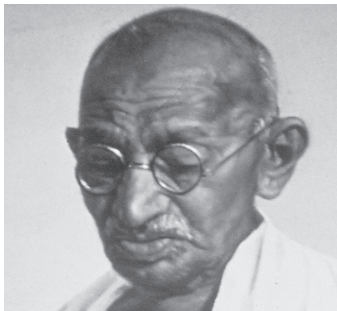
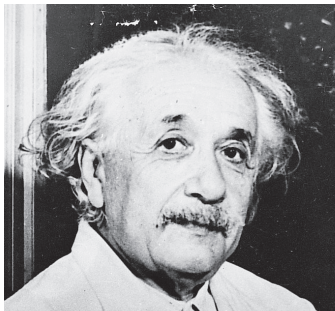


Guess who!



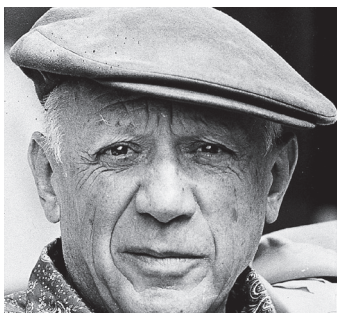
Gandhi



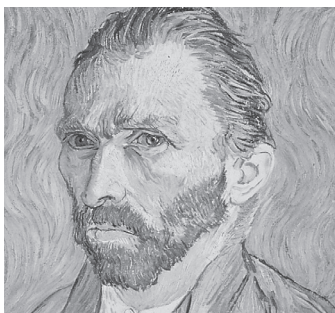
Albert Einstein



Marilyn Monroe



Pablo Picasso



Vincent van Gogh



Cervantes



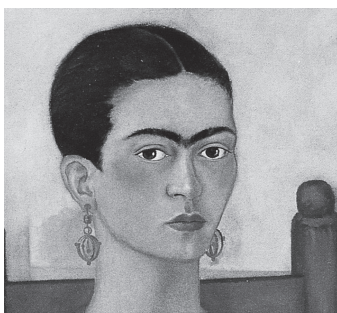
Walt Disney



Marie Curie



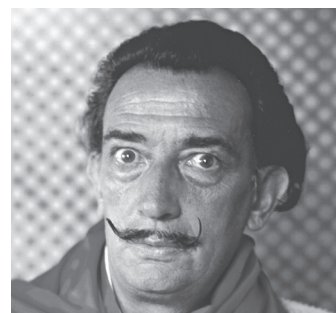
Anne Frank



Frida Kahlo



Queen Victoria



Salvador Dalí

Is it a man?

Yes, it is.

Work in groups of 3 or 4. Student A chooses a famous person and Students B, C (and D) try to guess the identity by asking questions. Student A can only answer *yes* or *no*. The student who guesses correctly wins the game. Repeat, taking turns to choose a person. The player with the highest score wins.